



## GREY WOLF

The 78ft / 24m FPB motor yacht 'Grey Wolf' was built in 2017 by Circa Marine [New Zealand] and designed by Steve Dashew. It is a purpose built polar boat with a CAT 0 rating, massive cruising range, extreme weather capabilities and a high level of comfort.

---

### SPECIFICATIONS

#### LENGTH

23.86 m | 78.28 ft

#### BEAM

6.12 m | 20.07 ft

#### YEAR

2017

#### CRUISING SPEED

10.75 knots

#### FLAG

BRITISH

#### DRAFT

1.85 m | 6.06 ft

#### CONSTRUCTION

ALLOY

#### RANGE

7100nm @ 10kn

#### RATING

CAT 0

### ACCOMODATION

GUESTS	CABINS	CREW
--------	--------	------

6*	3	3*
----	---	----

### CABIN CONFIGURATION

1 Master

2 Guest

\*Up to 7 Guests with Pipe Berth in Port Guest

\*Crew dependent on guest numbers and location







### ACCOMODATION

Grey Wolfs interior layout sleeps up to 6 guests in 3 rooms, including a master suite and two double cabins. Each room has its own ensuite. For larger groups the master suite can be split into two singles and the port guest has an optional pipe berth



Master Cabin: Spacious King Size Bed, Ample Storage, Separate Shower and Head, Full Wardrobe and Large Open Basin



Port Side Guest: Guest Rooms include a private ensuite (see next page), ample storage and full wardrobe.



Starboard Side Guest



Starboard Side Ensuite



## PERFORMANCE

Grey Wolf is built for form and function. The Aluminium Hull and Aluminium superstructure are built beyond spec and require almost no maintenance.

She is equipped with the NAIAD active stabilizer system to ensure comfortable cruising in all conditions. She has a massive 18360 L Fuel capacity and 7100 NM range as well as 300 L/hr water-maker.

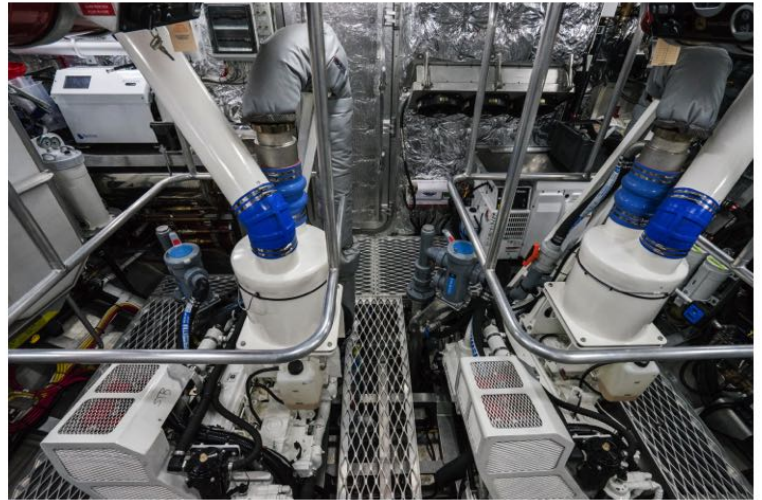
The design also included natural ventilation, a paint-less finish and 3.4kW solar array for reduced carbon footprint. As well as extensive EPDM Insulation to ensure maximum noise suppression from the engine generator and reducing heat transfer with the environment.

Grey Wolf can be piloted via two helms, each with 3x Radar, ECDIS and Navionic Charts, KVH and Satellite Compass, FLIR camera and a Furuno 360 searchlight sonar for exceptional navigation in any weather.

Even when offshore Grey Wolf can stay connected to the world via the Iridium Pilot, Iridium Go, HF | MF Radio, Sat C and Icom A120 for aircraft communications to ensure up to date weather forecasting and safety messages.

Grey Wolf is built to comply to MCA Cat O Standards, which allows her to operate in international waters at any distance from a safe port. Twin 231 Hp John Deeres push her along at a cruising speed of 11 knots and a max speed of 13.25 knots.

All of these features mean Grey Wolf can reach those far-away places, comfortably, safely, stylishly and efficiently without the need of timely refuelling or resupplying.



### SPECIFICATIONS

**Length:**  
23.86 m | 78.28 ft  
**Builder:**  
Circa Marine  
**Designer:**  
Steve Dashew  
**Model:**  
FPB 78  
**Built:**  
2017  
**Beam:**  
6.12 m | 20.07 ft  
**Draft:**  
1.85 m | 6.06 ft

**Gross Tonnage:**  
81.81 gt  
**Cruising Speed:**  
10 knots  
**Top Speed:**  
13.25 knots  
**Engines:**  
John Deere 6068AFM85 M1  
231 Hp @ 2300 RPM  
**Fuel Capacity**  
18360 L | 4850 gallons  
**Fresh Water**  
4160 L | 1099 gallons

**Generation**  
Cummins Generator  
3.4kW Solar Array  
2x 250amp Alternators  
**Flag**  
British  
**Port**  
Jersey  
**Rating**  
Cat 0





**AMENITIES**

Air conditioning  
Heating  
3x Water Heaters

Stabilizers  
Flopper Stoppers  
55" 4K TV with Movie hard drive

Complete Music System  
2x Fridge | 2x Freezers  
Electric BBQ

**TENDERS + TOYS**

**TENDER 1**

AB Marine 16  
4.9 m | 16 ft  
70 Hp | 35 knots  
Alloy Hull | Inflatable  
10 POBs  
AIS | GPS | Chart Plotter | Depth  
Sounder | VHF  
Anchor | Chain | Rope

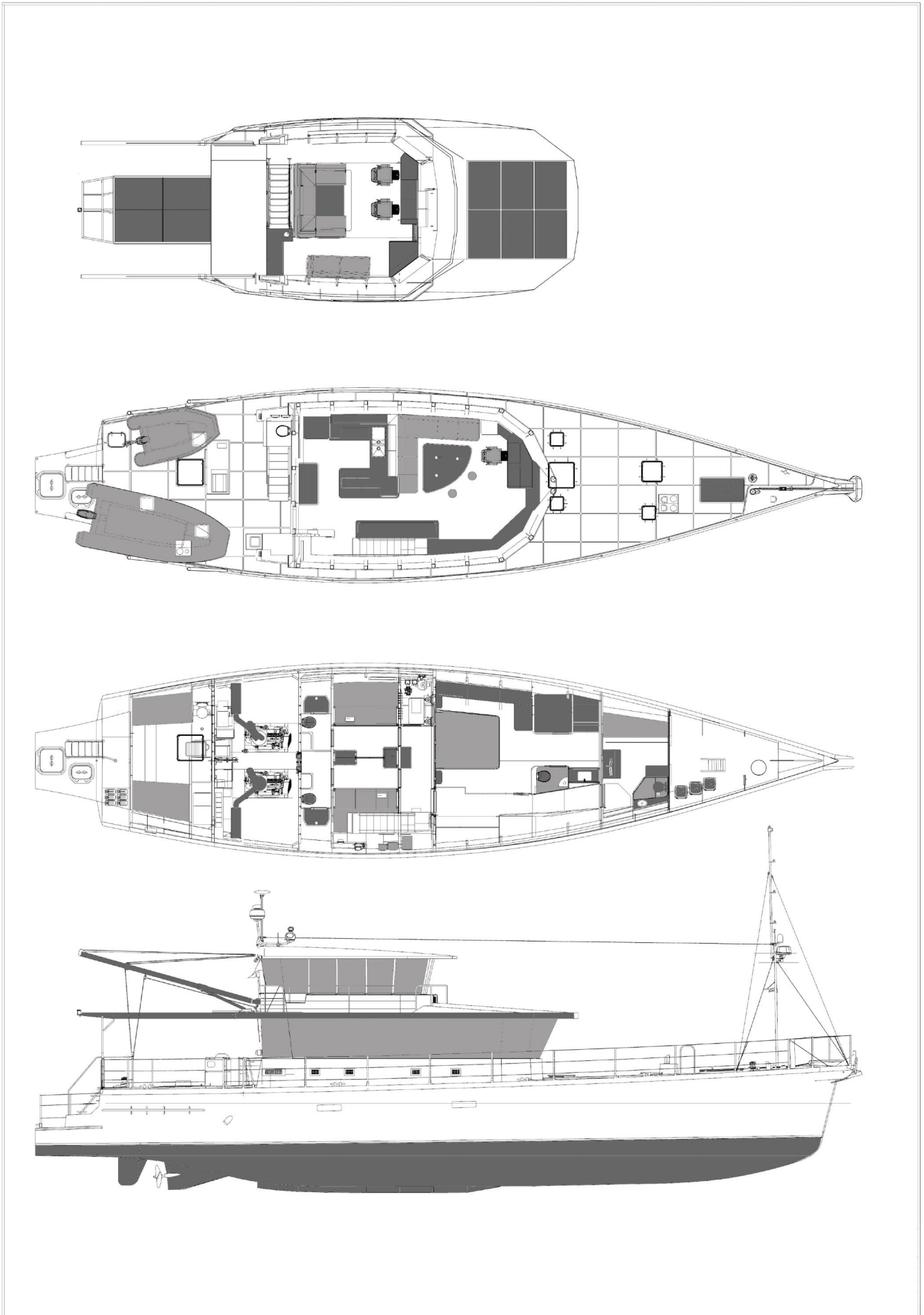
**TENDER 1**

AB Marine 9.5  
2.9 m | 9.6 ft  
15 Hp | 15 knots  
Alloy Hull | Inflatable  
Retractable landing wheels  
Anchor | Chain | Rope  
5 POBs

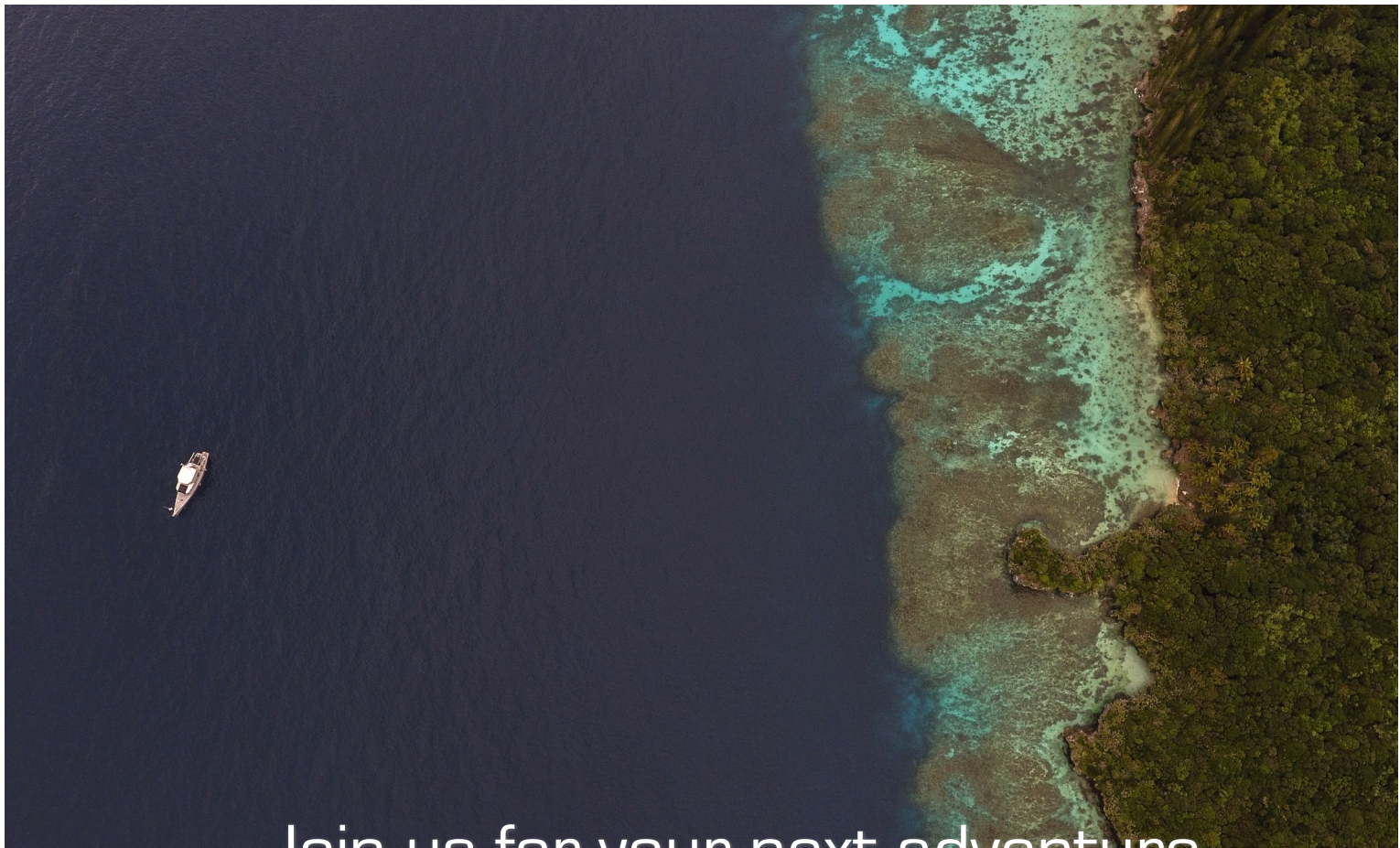
**TOYS**

Dive Compressor | 4x Alloy Tanks  
2x Kayaks with Seats  
1x Stand up Paddle board  
Snorkelling | Spearfishing Gear  
Fishing Gear  
Photography Lessons  
Surf board









Join us for your next adventure...



